

# MONTHLY MEMBERSHIP PROGRESS REPORT

District 10

Results as of: 11/30/2023

GMT:

LOCATION MICHIGAN

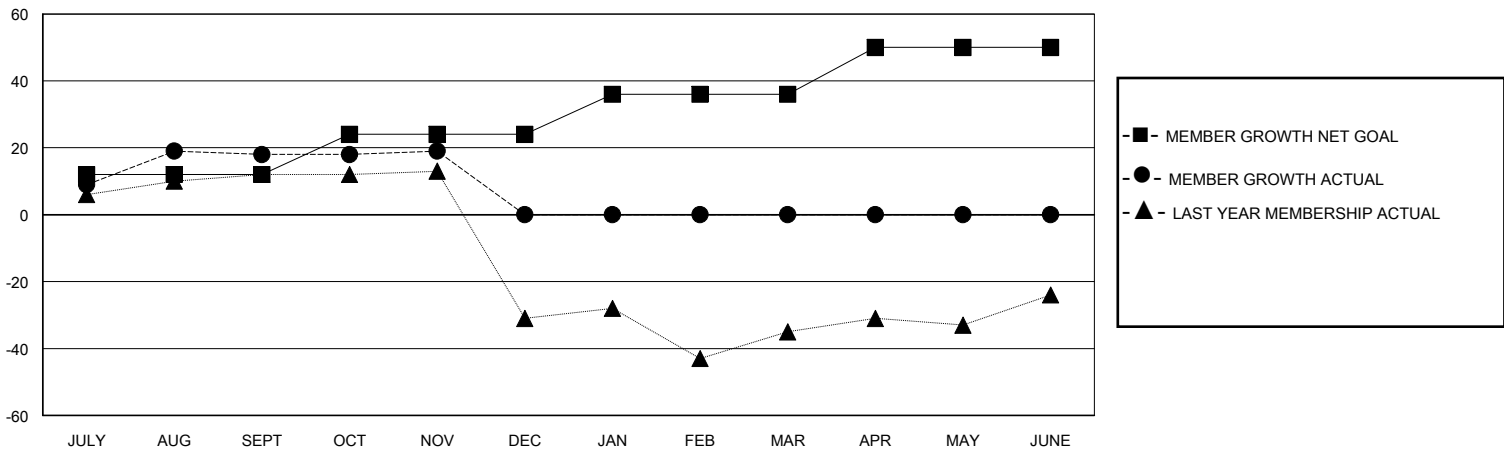
GMT CA

Clubs				Members			
RESULTS FOR 2023-2024				RESULTS FOR 2023-2024			
QUARTER	NEW CLUB GOAL	NEW CLUBS	DROPPED CLUBS	QUARTER	MEMBER GROWTH NET GOAL	MEMBER GROWTH ACTUAL	DROPPED MEMBERS ACTUAL (including transfers)
JULY/AUG/SEPT	0	0	0	JULY/AUG/SEPT	12	34	16
OCT/NOV/DEC	1	0	0	OCT/NOV/DEC	12	18	16
JAN/FEB/MAR	0	0	0	JAN/FEB/MAR	12	0	0
APR/MAY/JUNE	0	0	0	APR/MAY/JUNE	14	0	0

GOALS AND ACTUAL NEW CLUBS CUMULATIVE



GOALS AND ACTUAL MEMBERS CUMULATIVE



DROPPED CLUBS: 0	21 CLUBS OF 48 ADDED 1 OR MORE NEW MEMBERS	<b>GENDER DISTRIBUTION</b> MALE 895 (67.04%) FEMALE 438 (32.81%)
<b>DROPPED MEMBERS</b> DECEASED 5 CLUB CANCELLED 0 OTHER 27 TOTAL 32	<a href="#">CLICK HERE FOR CUMULATIVE MEMBERSHIP DATA</a>	TOTAL FAMILY UNIT MEMBERS 209 FAMILY MEMBERS PAYING HALF DUES 105